

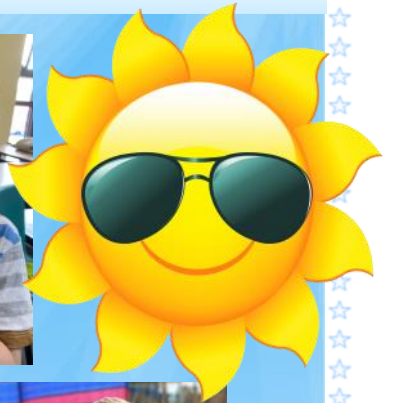


Friday Letter for Parents and Carers

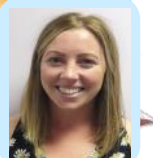
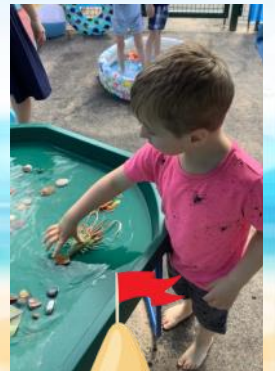
16th July 2021



Blossoms & Blossoms Hub

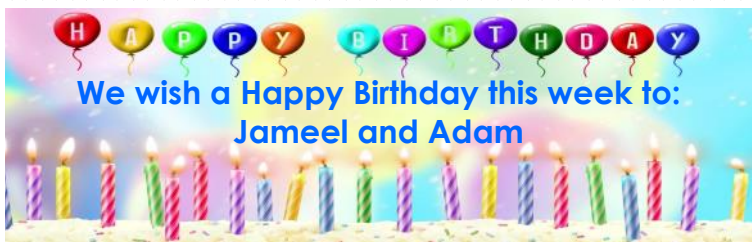


The Children in Blossoms and Blossoms Hub have had a brilliant time during our beach day. They enjoyed paddling and splashing in the water, digging in the sand, making sandcastles, and having a water fight before finishing the day off with a yummy ice-cream!



Olivia Hargreaves

FACE MASKS MUST BE WORN WHILST ON THE SCHOOL SITE. THANK YOU



School Meal Booking
Don't forget to book your child's meals on ParentPay.
Bookings must be made by the Wednesday for the following week. Thank you.

Parents Information– Max Cards

Families who live outside the City of York Council boundary, even if they attend York schools or services in York, will need to apply for a max card whether a brand new application or replacement, to their local authority. If your local authority does not issue them, parent/carers will need to contact their local Parent Carer Forum or local Family Information Service to discuss this. Find your local council: www.gov.uk/find-local-council The national MaxCard site will advise if the cards can be received from a local authority or charity.

East Riding

Families living in East Riding can receive a Look Ahead discount card if they sign up to Look Ahead. More information available on East Riding Families Information Service Hub.
 Families Information Service Hub Tel: (01482) 396469 Email: fish@eastriding.gov.uk

North Yorkshire

The below charities may supply Max Cards to North Yorkshire residents for a small fee. Unique Friends, Spectrum, Carers Leeds, NYPACT.org.uk for residents of North Yorkshire
 Max Cards generally give up to 2 adults and 2 children discounted access in to lots of participating attractions throughout the UK. If you have any questions about the Max Card and your eligibility for one then please contact: 01904 554444 / fis@york.gov.uk / www.yor-ok.org.uk/myfis

Fruity Berry Fruit Farm are offering a vulnerable Tuesday timed slot for wheelchair users, the elderly, disabled people and people with autism to come along and experience soft fruit picking in safety. Open 6 days a week from 10:30-18:00. Closed Tuesday to the public, open only on Tuesday for timed slots for wheelchair users and the vulnerable , booking is required in advance. The farm is located on Dishforth Road YO7 3DB. Please contact: 07985693692 or visit www.fruityberryfruitfarm.co.uk for more information.

